



FABER-CASTELL  
*since 1761*

# Water Brush



Finest Artists' Quality · Made in Germany

# Sustainable commitment

## Carbon-neutral production

Faber-Castell's forests in Prata, Southeast Brazil, absorb 900,000 tonnes of carbon dioxide (CO<sub>2</sub>), according to a scientific study by TÜV-Rheinland in 2012. The 10,000 hectare forestry project not only secures stocks of sustainable wood but also protects the environment through photosynthesis, which converts the CO<sub>2</sub> into biomass. The pine trees and forests in Prata, one third of which have been left untouched, therefore neutralise the climate-relevant carbon footprint of Faber-Castell's global production facilities. Large parts of the forests have become a habitat for rare species of animals and plants, a respectful interaction with nature is key for Faber-Castell.



Carbon Neutral  
Regular  
Surveillance  
Corporate Carbon  
Footprint

www.tuv.com  
ID 000040930



Wood from certified sustainable forestry is the most important raw material for the Faber-Castell product range.



The Faber-Castell Group is working worldwide to reduce plastics or replace them with recycled materials.



Every product contains valuable raw materials. To extend their usability, many products can be refilled.



Further information can be found on our sustainability website:  
<https://www.faber-castell.com/corporate/sustainability>

## Faber-Castell stands for quality

Faber-Castell is one of the world's leading manufacturers and marketers of quality products for writing, drawing and creative design – the brand name is world-famous. In the core area of woodcased pencils, the group is the most important and oldest manufacturer in the world with a production capacity of more than two billion pencils and coloured pencils.

Its Art & Graphic range allows Faber-Castell to enjoy a great reputation among artists and hobby painters. Prestigious creative minds have recognised this expertise since time immemorial – from Vincent van Gogh to Karl Lagerfeld. High quality artists' pigments ensure light resistance and thus brilliance and colour intensity for decades. All products are based on the same colour system, enabling reliable mixing techniques of artists' pencils, whether water-soluble or indelible.



# Water brush



The three-piece water brush impresses with ideal proportions and easy handling. Its compact size makes it the perfect companion for on the move.

## Cap

The integrated grooves and wedge-shaped design on the cap side can be used for scratch and scraping techniques.

## Brush with grip zone

The high-quality synthetic hairs are soft and pliable and hold large amounts of paint. The tip remains dimensionally stable even after intensive use. Secure hold and fatigue-free work are guaranteed with the ergonomically shaped grip zone.

## Water tank

The transparent water tank can be filled easily under running water and shows the available water quantity at all times. The cap is placed on the tap at the end.



Cap

with creative usage options

Brush

high-quality synthetic hair with dimensionally stable tip

Grip zone

with grooves for the perfect hold

Water tank

6 ml capacity



## Simple handling

It couldn't be easier: After filling the tank with water, the handle piece is screwed to the brush tip and you're ready to go.

When the cap is placed on the water tank, the water brush has the optimal length and sits perfectly in the hand.

The water quantity can be dispensed in a targeted way by applying slight pressure on the elastic water tank.

The high-quality synthetic hairs hold adequate amounts of colour pigment, the body of the hairs guarantees a homogeneous distribution of the pigments on the paper.

The tip of the brush can be cleaned quickly on a separate piece of paper or cloth. Applying a higher pressure on the water tank causes sufficient water to flow through the brush hairs to flush out the colour pigment.

Watercolour paper is the best choice for achieving great watercolour effects. Watercolour sketchbooks are ideal for spontaneous sketching while on the move.



# Artists' watercolour pencils

## Albrecht Dürer · Graphite Aquarelle

The fully water soluble Faber-Castell artists' pencils and markers create a perfect symbiosis with the water brush. The water brush transforms roughly drawn lines into smooth transitions (soft drawing) in the blink of an eye.

Once dissolved with water, the pigments of the Albrecht Dürer artists' watercolour pencils and Albrecht Dürer Watercolour Markers unveil their full colour intensity. If the dissolved colour is not intensive enough, paint can be collected directly from the lead with the wet brush or paint can be dissolved on a separate piece of paper and then applied to the damp colour area.

The creative combination of dry and wet techniques offers a wide range of individual uses.

Albrecht Dürer artists' watercolour pencils are available in 120 colours.

Albrecht Dürer Watercolour Markers are available in 30 colours.





FABER-CASTELL  
*since 1761*



The Graphite Aquarelle watercolour pencil with grades ranging from HB to 8B are water soluble and enable the artist to use paint effects in the drawing.



# Techniques

## Glaze · Wash · Wet-on-wet · Granulation

### Glaze

Glazing adds controlled depth to a picture layer on layer. Each layer of colour must dry before the next colour is applied. The layers of colour let the colours below shine through and mix with them optimally.

### Wash · Wet-on-wet

Generous amounts of water are used with both these techniques. The colours flow into each other in an uncontrolled and artistic way. For the wash technique, the paint is applied on dry paper, with the wet-on-wet technique, the paper is dampened with clean water before the paint is applied so that the colours run even more.

### Granulation

The paint is applied superficially using an almost dry brush, the pigments remain on the top layer of the paper grain. A structured paper surface is an advantage for this technique.

These techniques can be achieved with artists' watercolour pencils and with all conventional watercolours (pot or tube).





## Innovative techniques

### **Colour spritzing**

Colour spritzing can be used to create an unparalleled sense of airiness in water-colour artworks. For this technique, the tip of the brush is run over the lead of the coloured pencil in short, quick upwards and downwards motions so that paint splatters land directly on the picture. Different results can be created by varying the water quantity and the distance from the picture.



The sophisticated cap offers a range of interesting design options.

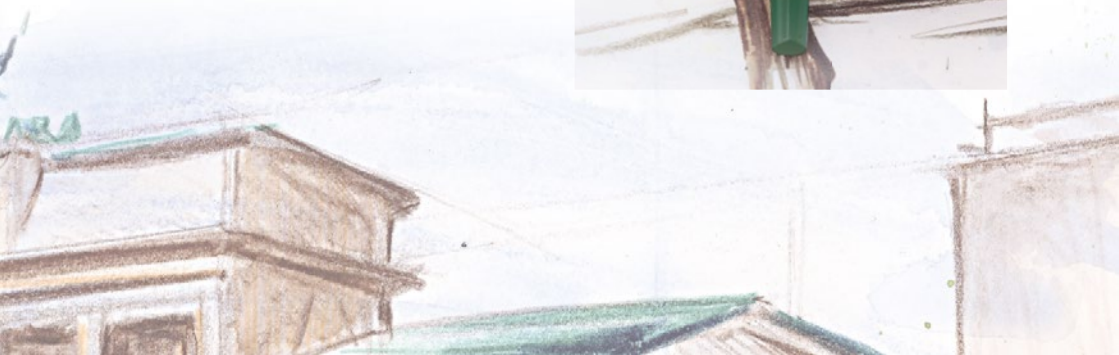
### **Scraping technique**

With the wedge-shaped side of the cap, the dissolved paint can be moved easily over the paper to create unusual structures like with a paint knife.



### **Scratching technique**

The integrated grooves on the cap are perfect for creative effects: The damp paper can be scored to add strong highlights to the picture with line patterns in various forms.



# Jens Hübner



Foto: Martina Henschke

## Urban sketching

“The new Faber-Castell water brush enables artists to colour sketches while on the move and to achieve different watercolour effects with no additional water tank. Water can be transferred from the tank into the brush hairs intuitively thanks to the ergonomic design of the brush. When closed, it is the most compact water brush on the market, which is why it’s my constant companion for discreet watercolour painting in cafés, museums and even on the tram.”

After graduating, qualified designer Jens Hübner living in Berlin was co-owner of a design agency for 10 years. He developed his method for drawing and watercolour painting on travels during a two-year trip around the world by bicycle. He teaches this method as a lecturer and travel guide in various seminars.

*More information on the artist:s*

[www.jenshuebner.de](http://www.jenshuebner.de)

[www.facebook.com/jens.huebner.berlin.germany](https://www.facebook.com/jens.huebner.berlin.germany)

[www.youtube.com/c/JensHuebnerGermany](https://www.youtube.com/c/JensHuebnerGermany)

